

### Materials Handling Products

- **Economical and Quiet Operation**
- **68.6 dBA @ 1 Meter Distance** (subject to background noise)
- **Developed for Small and Hard to Handle Products**

This is a transportation conveyor with a wider range of flexibility than conventional belt or chain driven live roller conveyors. Straights, curves, junction assemblies, and gates can all be powered by one drive for video tape distributors, breweries; computer, personal care and pharmaceutical industries.

**Operation:** Two-way (with extra spool clips), horizontal.

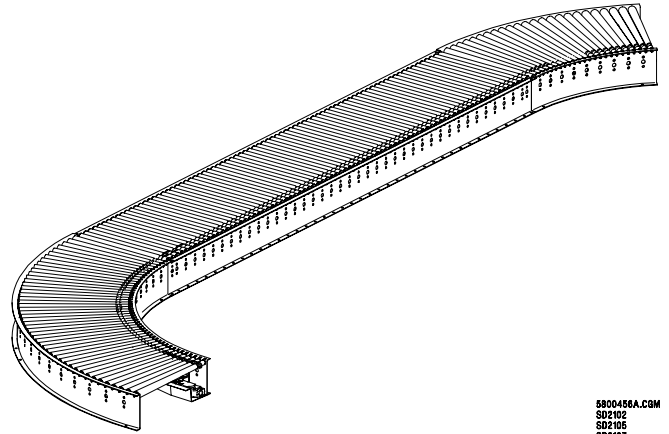
**Capacity:** 10 lb (50 lb unit load).

**Speeds:** 30 through 200 fpm.

**Motor and Reducer:** 1/2–2 hp Gearmotor.

**Shaft:** 1" diameter, cold rolled steel with self-aligning pillow block bearings. 1-15/16" diameter spools mounted on shaft. Shafts joined by delrin couplings.

**Belts:** 1/8" diameter, 83A durometer polyurethane.



6000458A.CGM  
SD2102  
SD2105  
SD2107

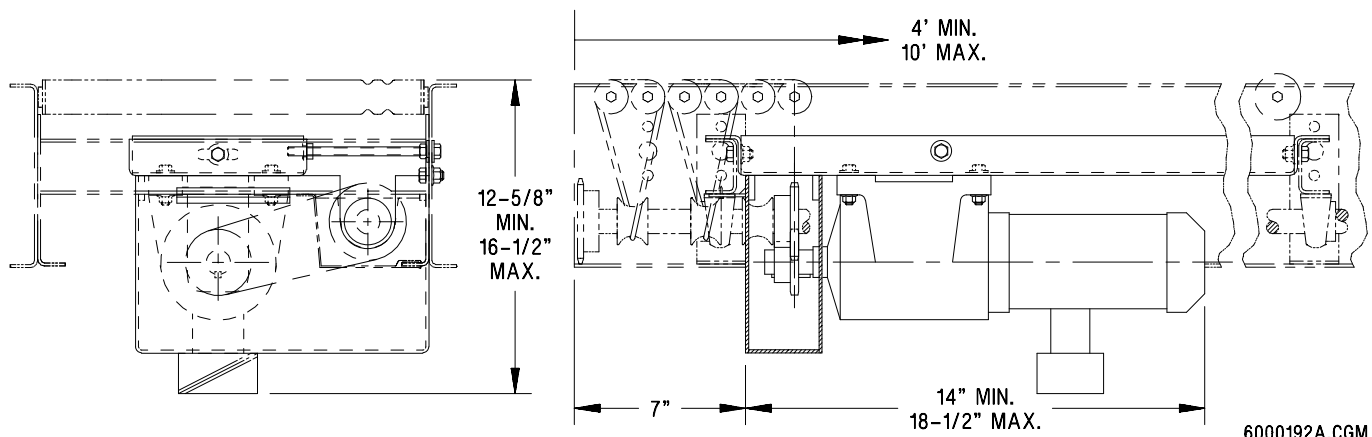
**Bed:** 10 gage, 7-1/2" deep, painted, 1-1/8" flanges, bolted and painted construction. Crossmembers are 2-1/4" deep channel with 1-1/4" flanges.

**Bed Length/Width:** 10' standard, 12", 18" and 24" wide. Minimum length for intermediate beds is 2'.

**Curve Degrees:** 30, 45, 60, 90 and 180.

**Junction Assembly:** 30 degrees with 1-1/2" roller centers. Includes a junction bed and junction spur.

**Rollers/Roller c-c:** 1.4" diameter, 18 gage zinc plated steel with 5/16" hex axle with No. 1607 bearings. Rollers are double grooved at one end and driven from the shaft of an adjacent roller. Rollers on curves are 16 gage, zinc plated with No. 1607 bearings. Rollers are tapered from 1" diameter at the small end. **All on 1-1/2" roller centers only.**



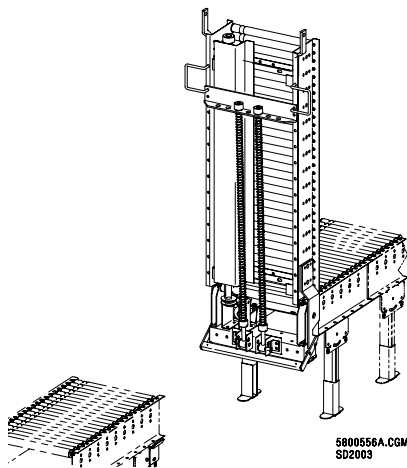
6000192A.CGM

# Model 1254 Lineshaft Conveyor

## Materials Handling Products

### Accessories

**Powered Gate:** A 46-5/16" frame hinges on a 23-1/4" stationary frame. When the gate is closed, the two shafts are connected through a drive sheave arrangement. Power is automatically removed as the gate is opened. The locking gate latch bar safely locks the gate open. The gate is counterbalanced and has the same general construction as a straight bed with rollers on 1-1/2" centers.



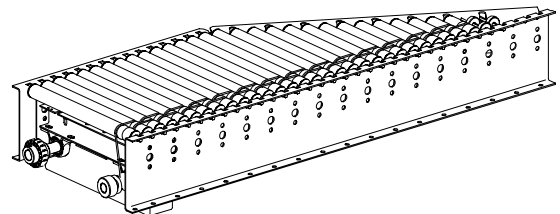
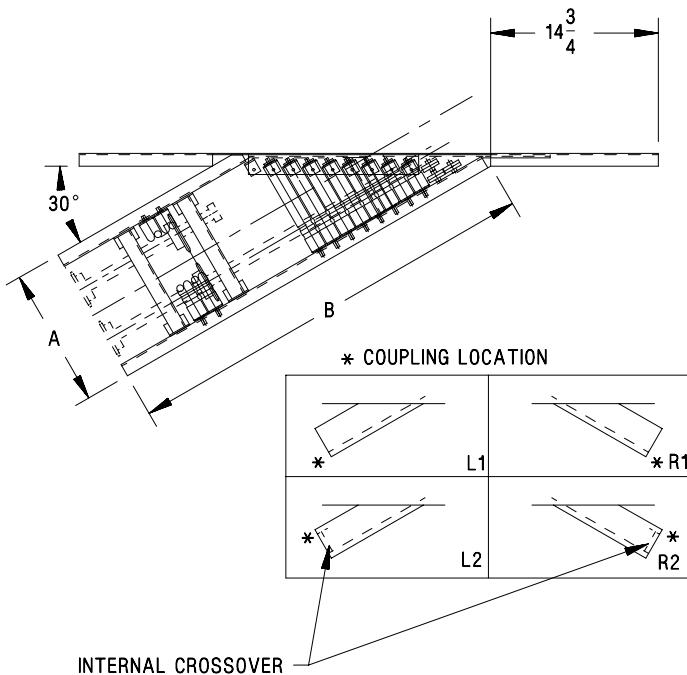
**Air Operated Brake:** a 34" friction pad actuated by two actuators.

**Speed-Up Spools:** Used in certain areas to create a gap between cartons. The larger spool diameter increases roller speed by approximately 40 percent.

**Spool Clips:** One clip is provided for each spool to prevent the spools from creeping along the shaft during operation. For two-way operation an additional clip is required on the opposite side of each spool.

**Spur Assembly:** For merging onto a main line. Spur assemblies driven by upstream lineshaft conveyor with no shaft connection to the main line. A junction spur attaches to a junction bed. A spur assembly typically attaches to a non-1254 bed.

A (in.)	B (in.)
12-1/4	37
18-1/4	46
24-1/4	55



5800553A.CGM  
SD2124