

**Bed Section:**

6" Deep x 1 3/8" Flange x 10 Gauge galvanized frame in 12" increments between 72" and 144".

**Galvanized Carring & Lifter Rollers:**

1 7/8" Diameter, 16 Gauge, with 7/16" hex axle.

**Drives:**

6", 8", or 10" Center Drives and 6" or 8" End Drives. Lagged pulley with automatic spring take-up on center drive. 8" wide Type 6 Friction x Friction belting. Fully enclosed chain and sprockets.

3/4 HP to 5 HP 230V-460V/3-Phase/60Hz. "C" face TEFC motor with reducer. Speed range is 60-320 FPM.

**Terminal End:**

4" or 6" Diameter plain pulley with pop-out roller.

**Axle Isolators:**

A specially designed conductive plastic insert isolates all carrying roller axles from the conveyor or frame to reduce noise and prevent wear caused by axle movement and vibration.



Automotion's quiet running, versatile and economical live roller conveyor components are important elements of conveyor systems that require side loading and smooth integration of a countless number of processed materials from small to large sizes in weights up to 100 pounds per foot. Automotion's Transportation Air Conveyor are motor driven and provide a positive, non-adjustable driving force to the carrying roller assembly for positive transportation of product loads. The PLC controlled air feature responds to conditions monitored downstream, engaging and disengaging the drive belt as needed.

Automotion's pre-engineered belt driven live roller conveyor components are economical, versatile, flexible, durable, and are easy to install. These components feature specially designed and easy to replace belts, and galvanized rollers and sideframes. Automotion Transportation Air Live Roller Conveyor is easy to maintain for long life.

**Typical Applications:**

Transportation

**Live Load Capacity:**

Up to 100 lbs/ft. depending on width, roller centers, supports, etc.

**Nominal Widths:**

18", 24", 30" & 36"

**Between Rail Widths:**

15 1/2", 21 1/2", 27 1/2" & 33 1/2"

**Carrying Roller Centers:**

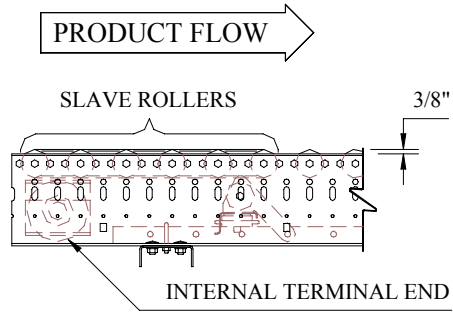
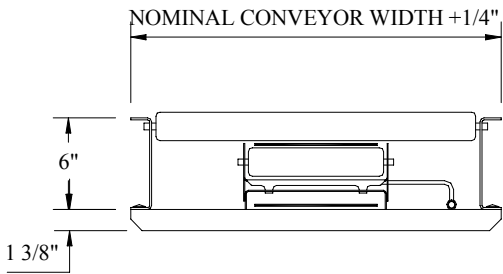
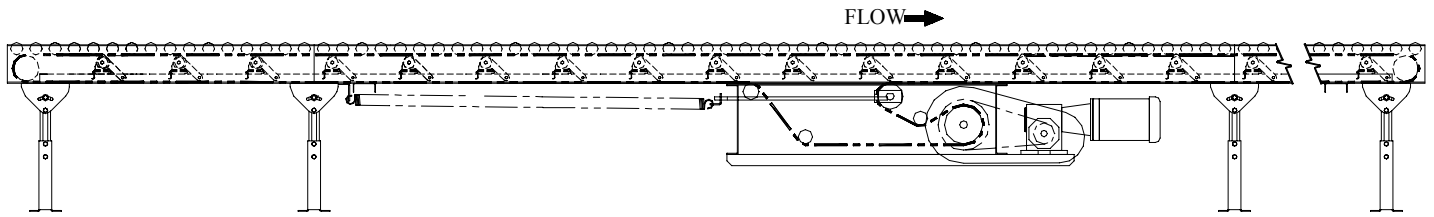
2", 3" & 4"

**Lifter Roller Centers:**

6" & 12"

**Options:**

- Various Take-Up Options
- Various Guard Rail Options
- Various Floor & Ceiling Supports
- High Speed Rollers (standard for speeds greater than 180 FPM).
- Cog Drive Belt
- Power Take-Off Units
- Pop-Out Carrying Rollers
- Coated Rollers
- Machine Crown Pulleys
- Terminal End Covers
- Pop-Out Roller at Terminal End
- Automatic & Manual Air Brakes



11000 South Laverne Avenue Oak Lawn, Illinois 60453-5500  
 Phone: 708-229-3700 Fax: 708-229-3799  
[www.automotionconveyors.com](http://www.automotionconveyors.com)  
[info@automotionconveyors.com](mailto:info@automotionconveyors.com)