

Bed Section:

6" Deep x 1 3/8" Flange x 10 Gauge galvanized frame in 12" increments between 72" and 144". Accumulation zones 24".

Galvanized Carrying & Lifter Rollers:

1 7/8" Diameter, 16 Gauge, with 7/16" hex axle.

Drives:

6", 8", or 10" Center Drives and 6" or 8" End Drives. Lagged pulley with automatic spring take-up on center drive. 8" wide Type 6 Friction x Friction belting. Fully enclosed chain and sprockets. 3/4 HP to 5 HP 230V-460V/3-Phase/60Hz. "C" face TEFC motor with reducer. Speed range is 60-320 FPM.

Terminal End:

4" or 6" Diameter plain pulley.

Mechanical Sensor Roller Assembly:

1 7/8" Diameter, 16 Gauge carrying rollers with 7/16" hex axles, 1" Diameter, 18 Gauge actuating and counter balance rollers, mechanically actuated air valve.

Axle Isolators:

A specially designed conductive plastic insert isolates all carrying roller axles from the conveyor frame to reduce noise and prevent wear caused by axle movement and vibration.



Feature-for-feature, no other conveyor on the market matches with Automotion's Zero pressure Accumulation Live Roller Conveyor. This system safely handles loads to 100 pounds per foot.

Automotion's patented pivoting counter-balanced sensor roller assembly maintains super sensitivity without ever requiring adjustment. The sensor requires only 8 ounces of pressure to actuate the air valve. This feature alone eliminates any need for the use of noisy mechanical devices. Our unique design incorporates sleeves mounted on each sensor assembly which virtually eliminates the possibility of cardboard dust from hindering the pivoting action of the sensor.

Automotion's specially engineered Zero Pressure Accumulation Conveyor is the simplest, most maintenance-free unit of its kind on the market. It is economical, versatile, durable, easy-to-install and features galvanized rollers and frames.

Typical Applications:

Transportation
Zero Pressure Accumulation
Staging
Diverging & Merging

Live Load Capacity:

Up to 100 lbs/ft. depending on width, roller centers, supports, etc.

Nominal Widths:

18", 24", 30" & 36"

Between Rail Widths:

15 1/2", 21 1/2", 27 1/2" & 33 1/2"

Carrying Roller Centers:

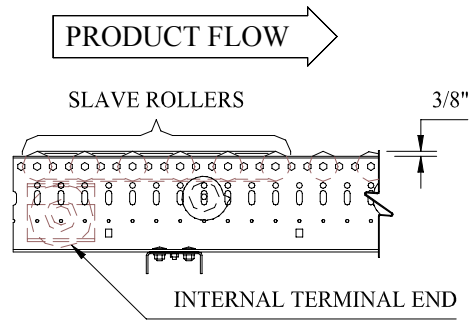
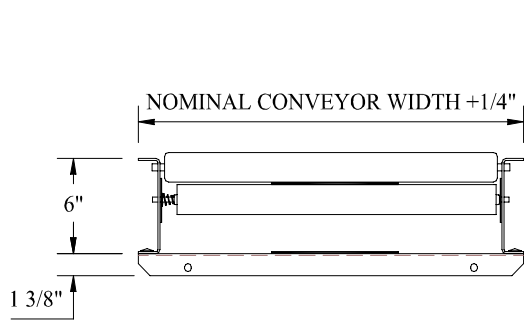
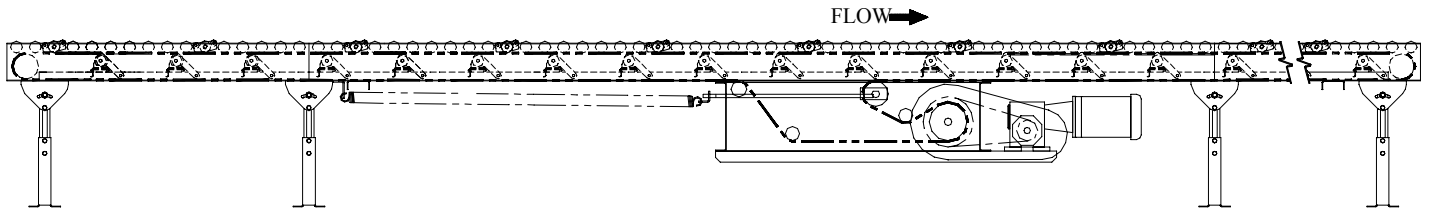
2", 3" & 4"

Lifter Roller Centers:

6" & 12"

Options:

Various Take-Up Options
Various Guard Rail Options
Various Floor & Ceiling Supports
High Speed Rollers (standard for speeds greater than 180 FPM).
Cog Drive Belt
Tandem Sensors
Pop-Out Carrying Rollers
Urethane Coated Rollers
Machine Crown Pulleys
Terminal End Covers
Automatic & Manual Air Brakes
Slug Release



11000 South Laverne Avenue Oak Lawn, Illinois 60453-5500

Phone: 708-229-3700 Fax: 708-229-3799

www.automotionconveyors.com

info@automotionconveyors.com