

AUTOMOTION PhotoEye Accumulation Live Roller(PE)

Bed Section:

6" Deep x 1 3/8" Flange x 10 Gauge galvanized frame in 12" increments between 72" and 144". Accumulation zones are 24" or 36".

Galvanized Carrying & Lifter Rollers:

1 7/8" Diameter, 16 Gauge, with 7/16" hex axle.

Drives:

6", 8", or 10" Center Drives and 6" or 8" End Drives. Lagged pulley with automatic spring take-up on center drive. 8" wide Type 6 Friction x Friction belting. Fully enclosed chain and sprockets. 3/4 HP to 5 HP 230V-460V/3-Phase/60Hz. "C" face TEFC motor with reducer. Speed range is 60-320 FPM.

Terminal End:

4" or 6" Diameter plain pulley.

PhotoEye/Solenoid Sensor Assembly:

24 VDC photo-eye/solenoid module with polarized retro-reflective eye.



Axle Isolators:

A specially designed conductive plastic insert isolates all carrying roller axles from the conveyor frame to reduce noise and prevent wear caused by axle movement and vibration.



Feature-for-feature, no other conveyor system on the market matches with Automotion's Zero Pressure PhotoEye Accumulation Live Roller Conveyor. There are no minimum weight restriction and it will convey items weighing as much as 250 pounds while running smoothly and quietly without stress.

Automotion's custom designed integral photo-eye/solenoid module locally monitors and controls each zone of the accumulation conveyor. Multi-color LED's provide a constant status of the photo-eye and the solenoid. A built-in time delay feature in the photo-eye increases throughput by preventing intermittent slowing of the product load. The photo-eye sensor is capable of sensing the presence of a wide variety of product loads including very light product and product with uneven bottoms. The photo-eye can also be skewed to sense totes or other product that leave gaps between items when accumulated. It releases in singulation mode, but can support slug discharge applications without requiring air or electrical modifications. Any accumulation photo-eye can be used to extract and send line condition information to the programmable controller for use in system control.

Typical Applications:

Transportation
Zero Pressure Accumulation
Staging
Diverging & Merging

Live Load Capacity:

Up to 100 lbs/ft. depending on width, roller centers, supports, etc.

Nominal Widths:

18", 24", 30" & 36"

Between Rail Widths:

15 1/2", 21 1/2", 27 1/2" & 33 1/2"

Carrying Roller Centers:

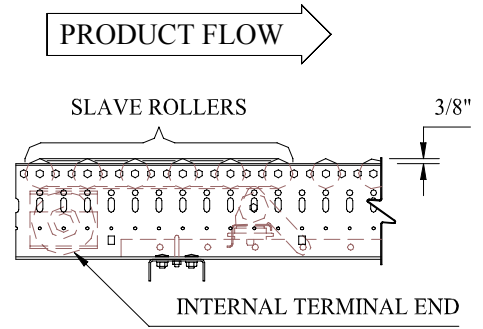
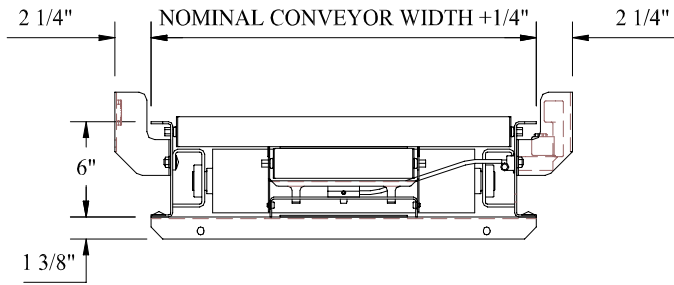
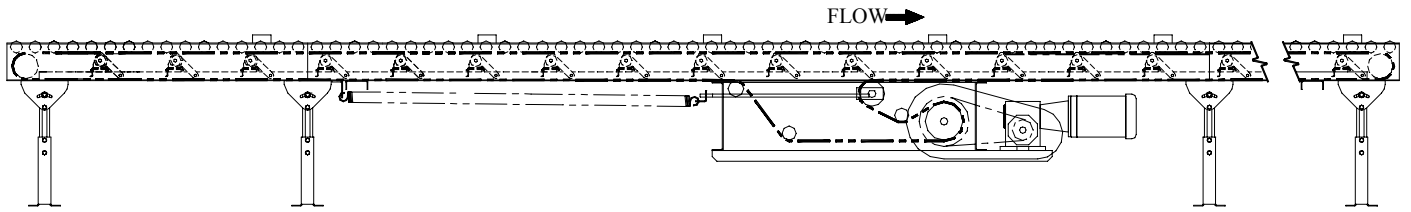
2", 3" & 4"

Lifter Roller Centers:

6" & 12"

Options:

Various Take-Up Options
Various Guard Rail Options
Various Floor & Ceiling Supports
High Speed Rollers (standard for speeds greater than 180 FPM).
Cog Drive Belt
24" & 36" Accumulation Zones
Pop-Out Carrying Rollers
Coated Rollers
Machine Crown Pulleys
Terminal End Covers
Pop-Out Roller at Terminal End
Automatic & Manual Air Brakes
Slug Release



11000 South Laverne Avenue Oak Lawn, Illinois 60453-5500
 Phone: 708-229-3700 Fax: 708-229-3799
www.automotionconveyors.com
info@automotionconveyors.com