

# **AUTOMOTION** Adj. Pressure Live Roller Conveyor (AP)

## **Bed Section:**

6" Deep x 1 3/8" Flange x 10 Gauge galvanized frame in 12" increments between 12" and 144".

## **Galvanized Rollers:**

*Carrying:* 1 7/8" Diameter, 16 Gauge, with 7/16" hex axle.

*Pressure:* 1 7/8" Diameter, 16 Gauge, with 5/16" hex axle.

## **Drives:**

6", 8", or 10" Center Drives and 6" or 8" End Drives. Lagged pulley with automatic spring take-up on center drive. 8" wide Type 6 Friction x Friction belting. Fully enclosed chain and sprockets.

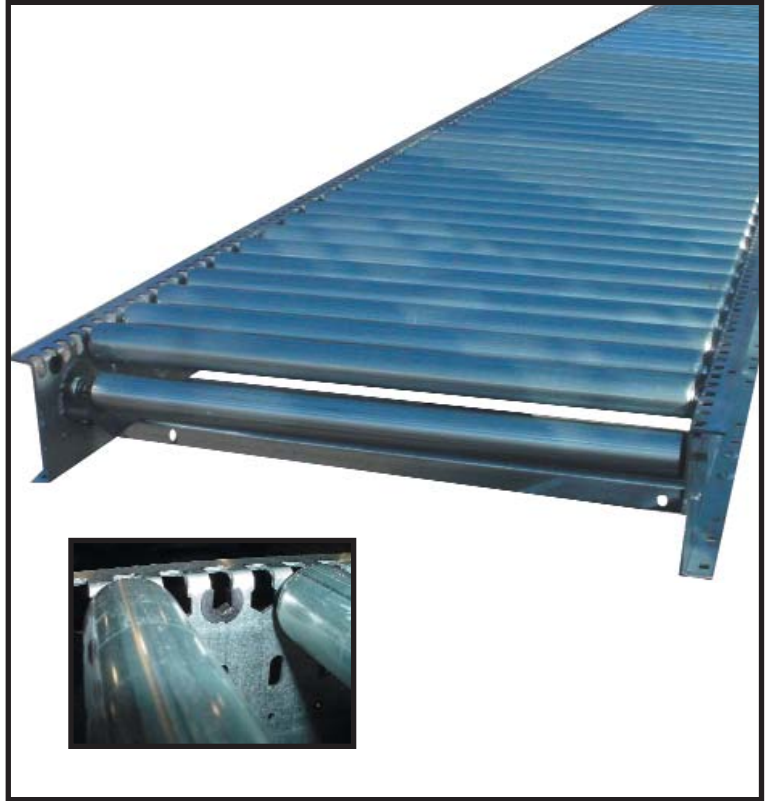
3/4 HP to 5 HP 230V-460V/3-Phase/60Hz. "C" face TEFC motor with reducer. Speed range is 60-320 FPM.

## **Terminal End:**

4" or 6" Diameter plain pulley.

## **Axle Isolators:**

A specially designed conductive plastic insert isolates all carrying roller axles from the conveyor frame to reduce noise and prevent wear caused by axle movement and vibration.



Automotion's quiet running, versatile and economical live roller conveyor components are important elements of conveyor systems that require side loading and smooth integration of a countless number of processed materials from small to large sizes in weights up to 100 pounds per foot.

Automotion's Adjustable Pressure Live Roller Conveyors are motor driven with adjustability built-in to adapt to minimum pressure accumulation smoothly and quietly. The pressure roller assemblies utilized on the Adjustable Pressure Live Roller Conveyor are equipped with an adjustable cam. The height of the pressure roller is adjusted by rotating the cam. The cam is stepped so that as it rotates the pressure roller moves upward or downward.

Automotion's pre-engineered belt driven live roller conveyor components are economical, versatile, flexible, durable, and are easy to install. They feature galvanized rollers, point-by-point cam adjustable pressure rollers, specially designed and easy to replace belts, and are easy to maintain for long life.

## **Typical Applications:**

Transportation  
Minimum Pressure Accumulation  
Picking Conveyor

## **Live Load Capacity:**

Up to 100 lbs/ft. depending on width, roller centers, supports, etc.

## **Nominal Widths:**

18", 24", 30" & 36"

## **Between Rail Widths:**

15 1/2", 21 1/2", 27 1/2" & 33 1/2"

## **Carrying Roller Centers:**

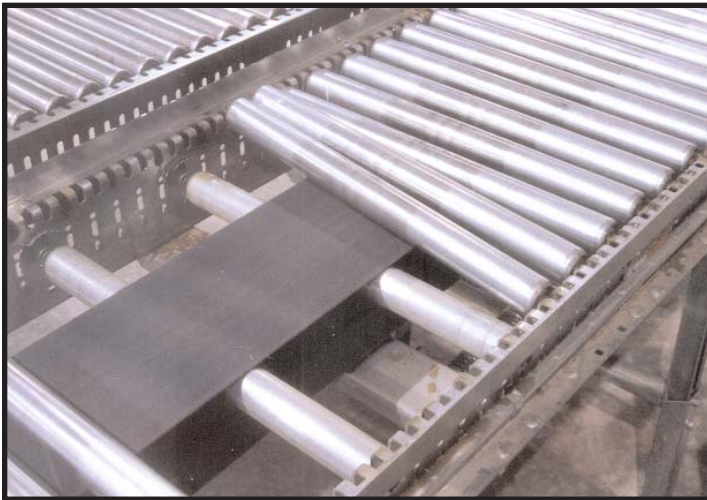
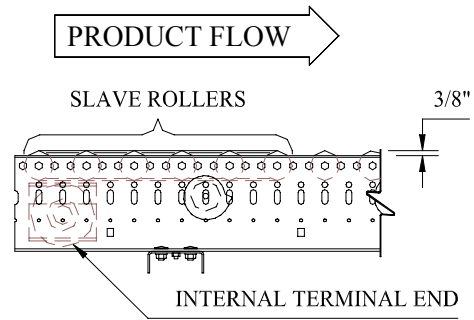
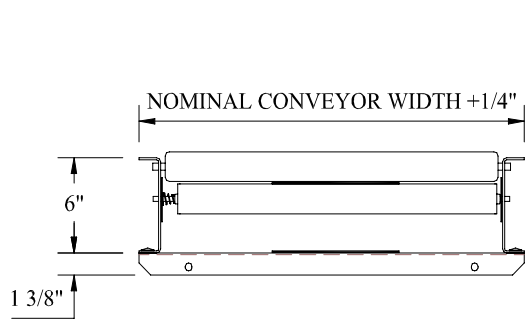
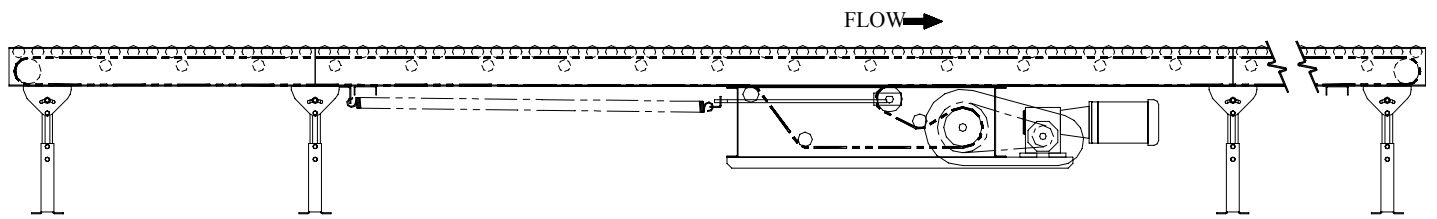
2", 3" & 4"

## **Pressure Roller Centers:**

9"

## **Options:**

Various Take-Up Options  
Various Guard Rail Options  
Various Floor & Ceiling Supports  
High Speed (standard for speeds greater than 180 FPM).  
Cog Belt Drive  
Power Take-Off Units  
Pop-Out Carrying Rollers  
Coated Rollers (*at air brakes*)  
Drop Kit  
Terminal End Covers  
Pop-Out Roller at Terminal End  
Automatic & Manual Case Stops



11000 South Laverne Avenue Oak Lawn, Illinois 60453-5500  
 Phone: 708-229-3700 Fax: 708-229-3799  
[www.automotionconveyors.com](http://www.automotionconveyors.com)  
[info@automotionconveyors.com](mailto:info@automotionconveyors.com)