

**Bed Section:**

5 1/4" Deep x 12 Gauge galvanizid frame in 6" increments between 12" and 144".

**Galvanized Belt Return Rollers:**

1 7/8" Diameter, 16 Gauge, return rollers with 7/16" hex axle on nominal 6' centers.

**Drives:**

6", 8", or 10" Center Drives and 6" or 8" End Drives. Lagged pulley with automatic spring take-up on center drive. Fully enclosed chain and sprockets.

3/4 HP to 5 HP 230V-460V/3-Phase/60Hz. "C" face TEFC motor with reducer. Speed range is 60-320 FPM.

**Termnal End:**

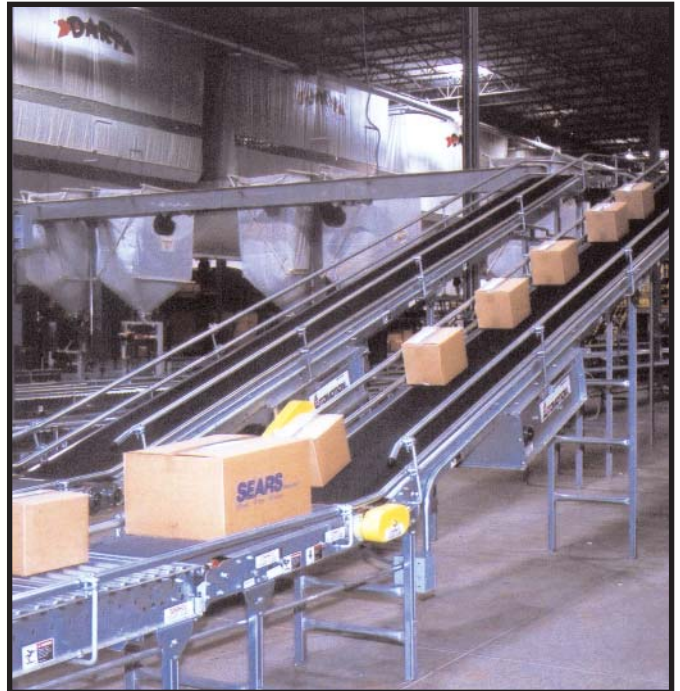
4", 5" or 6" Diameter plain pulley with pop-out roller.

**Belting:**

Type 3 Ruff Top Surface x Friction Surface.

**Axle Isolators:**

A specially designed conductive plastic insert isolates all return roller axles from the conveyor frame to reduce noise and prevent wear caused by axle movement and vibration.



An outstanding and dependable conveyor that is pre-engineered to transport up to 100 pounds per foot of varied products and materials from one elevation to another, in either direction. The degree of incline is from 7 degrees to 27 degrees.

Automotion's Incline/Decline Slider Bed Belt Conveyor is a quality unit that is economically priced. This unit runs smoothly and quietly, is easy to maintain and is manufactured to withstand heavy, continuous day-to-day use.

Wherever you need to move your products or materials up or down, at any point in the conveyor line, there's an incline or decline modular unit available that can be installed easily into any conveyor system. Automotion's pre-engineered Incline/Decline Slider Bed Belt Conveyor is a versatile performer with a long life. This unit features galvanized return rollers, rugged rough top belts, fully enclosed drive components, and optional power sources. Power feeder units and are constructed of heavy gauge galvanized metal.

**Typical Applications:**

Transportation  
Elevation Changes  
Trash Conveyor

**Live Load Capacity:**

Up to 130 lbs/ft. depending on width, roller centers, supports, etc.

**Nominal Widths:**

18", 24", 30", 36", 42" & 48"

**Standard Belt Widths:**

14", 20", 24", 30", 36" & 42"

**Nose over Splice:**

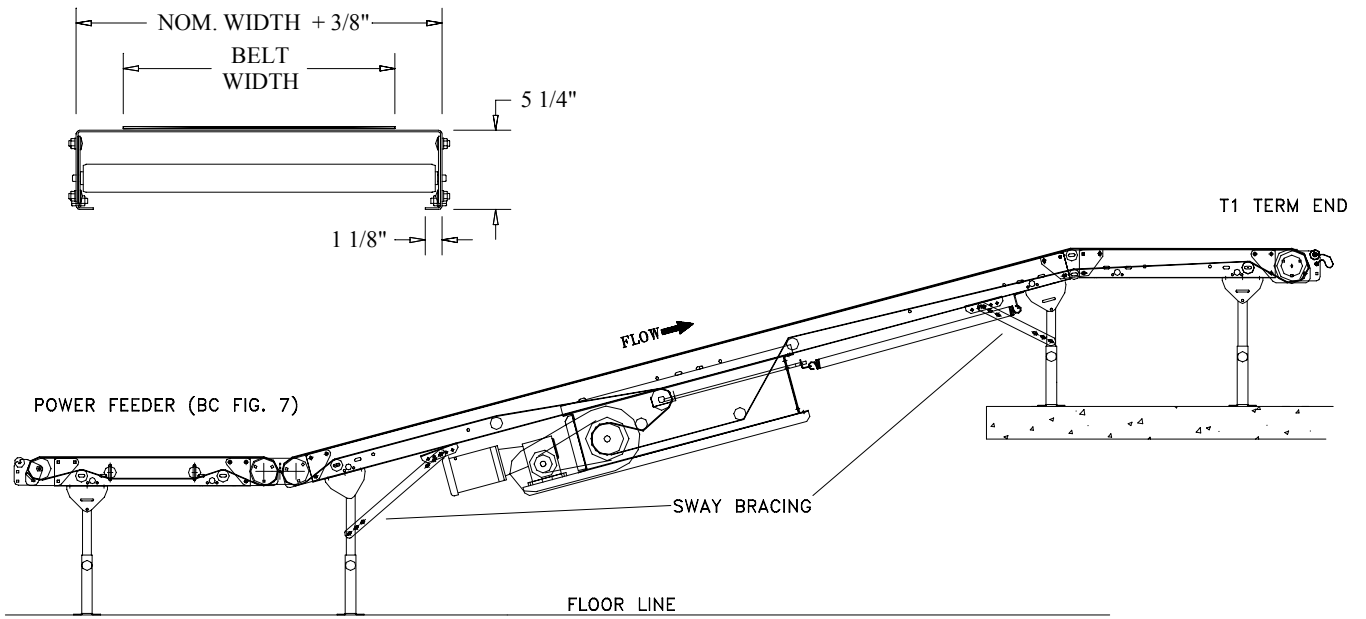
NOS-1 Adjustable 7 to 17 degrees  
NOS-2 Adjustable 17 to 27 degrees

**Power Feeder Unit:**

Type 1 endless black friction surface, slave driven belt. Bed length equal to nominal width plus 12".

**Options:**

Various Take-Up Options  
Various Guard Rail Options  
Various Floor & Ceiling Supports  
High Speed rollers (standard for speeds greater than 180 FPM).  
Drop Kit  
Bottom Covers  
Punch for Top Mount Guard Rail  
Synchronous Belt Drive  
Cog belt Drive



11000 South Laverne Avenue Oak Lawn, Illinois 60453-5500  
 Phone: 708-229-3700 Fax: 708-229-3799  
[www.automotionconveyors.com](http://www.automotionconveyors.com)  
[info@automotionconveyors.com](mailto:info@automotionconveyors.com)