

**Round Belt Live Roller Curves and Junctions**

**Materials Handling Products**

- Self-Powered or Slave Driven
- Economical
- Versatile
- Galv/Zinc Plated Rollers

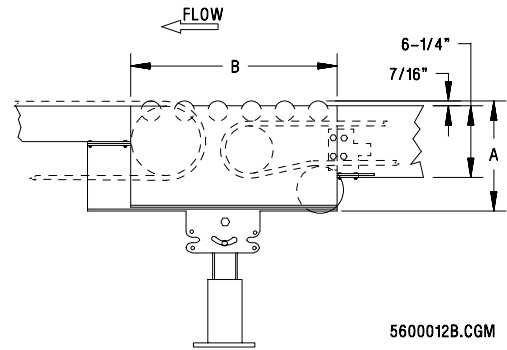
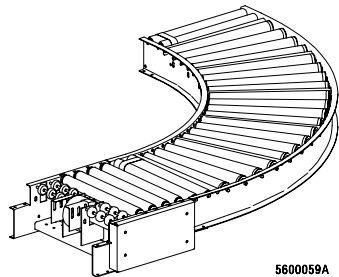
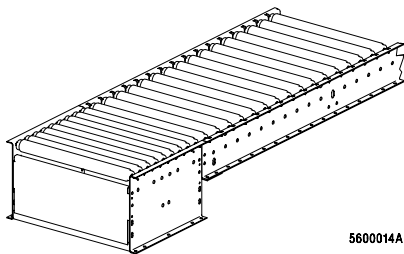
These are round-belt-driven live roller curves and junctions that provide economical movement of materials onto or off main line conveyors. Curves, junctions, or combinations of both can be self-powered or slave driven.

**Operation:** Two-way, horizontal.

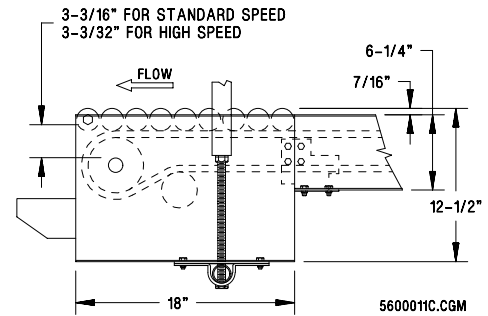
**Capacity:** 150 lb/ft or 500 lb total distributed load.

**Speeds:** Self-powered drive surface at 47 to 371 fpm.

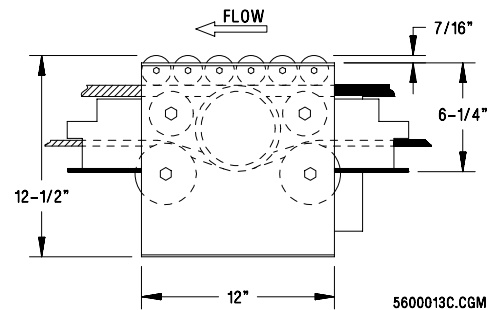
**Drives:** Slave drive, end drive, center drive, and center drive for unequal width curve and junction. Power transmitted to round belt through a 5-3/4" outside diameter cast iron sheave on a 1-3/16" diameter shaft (1" for standard speed end drive).



**Slave Drives**



**End Drives**



**Center Drives**

**Slave Drive Dimensions**

For Model	A (in.)	B (in.)
405, 410	10-9/32	16-7/16
1102	10-5/16	17-7/8
1211, 1221, 1230	10-9/32	18
1274	10-9/32	17-7/8
1176, 1276	10-11/16	6
1278	15-9/16"	6"

**Model 996**

**Round Belt Live Roller Curves and Junctions**

**Materials Handling Products**

**Motor and Reducer:** 1/3–1 hp, C-face.

**Belt:** 9/16" diameter endless round belt.

**Bed:** 10 gage, 6-1/4" deep, 1-1/8" flanges, painted, welded construction.

**Rollers:** Curved portions have 14 gage, tapered, zinc plated steel tubing with 7/16" hex FZ bearings, 1-5/8" OD at small end, 2-1/2" OD at large end. Straight portions have 1.9" diameter, 16-gage galvanized steel rollers with 7/16" hex SR bearings.

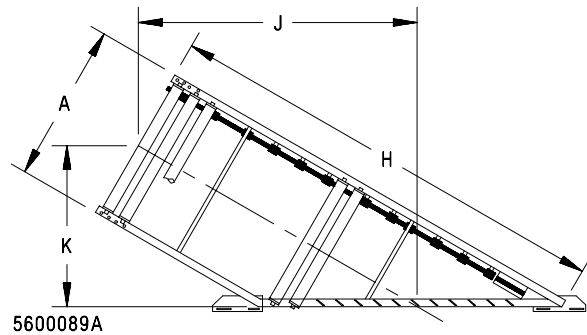
**Roller Centers:** 3" for junctions. Varies for drives and curves.

**Pressure Sheaves:** 2-3/4" outside diameter plastic with lubed for life bearing.

**Options**

**Rollers:** 14 gage, EQ bearings for tapered rollers. 14 gage HQ bearings for straight rollers.

**High Speed Units:** Above 200 fpm, units will have heavy duty flange bearings with larger, turned, ground, and polished shafts, sintered bushing chain with idler take-up sprocket, and EQ or HQ bearings in the rollers.



**Junction Dimensions**

A (in.)	H* (ft)		30°		45°	
	30°	45°	J (in.)	K (in.)	J/K (in.)	
18-1/4	—	3	—	—	19-13/16	
	4	4	29-9/16	17-1/8	28-5/16	
	5	5	39-15/16	23-1/8	36-13/16	
	6	6	50-3/8	28-1/8	45-1/4	
	7	7	60-3/4	35-1/8	53-3/4	
	8	8	71-1/8	41-1/8	62-1/4	
	9	9	81-1/2	46-1/8	70-3/4	
	10	10	91-15/16	52-1/8	79-3/16	
24-1/4	—	4	—	—	26-3/16	
	5	5	35-7/16	20-1/2	34-11/16	
	6	6	45-7/8	26-1/2	43-1/8	
	7	7	56-1/4	32-1/2	51-5/8	
	8	8	66-5/8	38-1/2	60-1/8	
	9	9	45-3/16	44-1/2	68-5/8	
	10	10	87-7/16	50-1/2	77-1/16	
	30-1/4	—	5	—	—	32-9/16
6		6	41-3/8	23-7/8	41	
7		7	51-3/4	29-7/8	49-1/2	
8		8	62-1/8	35-7/8	58	
9		9	72-1/2	41-7/8	66-1/2	
10		10	82-15/16	47-7/8	75	
36-1/4		—	5	—	—	30-7/16
		—	6	—	—	38-15/16
	7	7	47-1/4	27-5/16	47-3/8	
	8	8	57-5/8	33-5/16	55-7/8	
	9	9	68	39-5/16	64-3/8	
	10	10	78-7/16	45-5/16	72-7/8	

\* 90° H = 2' through 10'

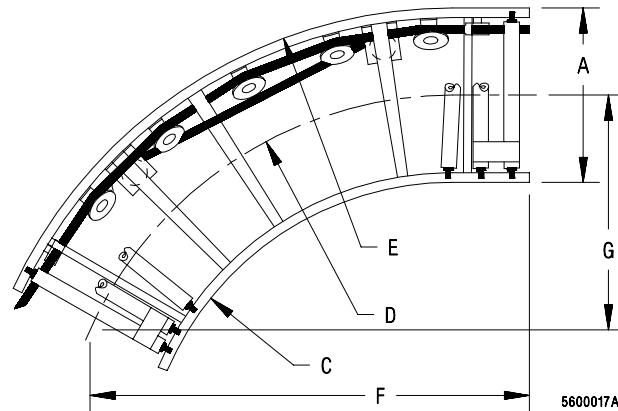
**Conveyor Weights (lb)**

Component	Width			
	18"	24"	30"	36"
Junctions (lb/ft)	22	26	30	34
30° Curve	132	163	203	251
45° Curve	153	195	258	315
60° Curve	170	228	299	383
90° Curve	196	276	376	494
Slave Drives:				
405, 410	114	125	137	149
1102	102	115	128	140
1211, 1221, 1230	106	115	—	—
1274	108	116	130	140
End Drive	157	170	183	197

Curves include 60 lb for support and drives include 30 lb for supports.

**Round Belt Live Roller Curves and Junctions**

**Materials Handling Products**



**Curve Dimensions**

A	C	D	E	F	G	Degree
18-1/4"	24-3/4"	33-7/8"	43"	30-15/16"	8-1/4"	30
				36-3/4"	15-1/4"	45
				40-5/8"	23-7/16"	60
				41-3/8"	41-3/8"	90
24-1/4"	35-9/16"	47-11/16"	59-13/16"	37-13/16"	10-1/8"	30
				46-1/2"	19-1/4"	45
				52-9/16"	30-5/16"	60
				55-3/16"	55-3/16"	90
30-1/4"	46-3/8"	61-1/2"	76-5/8"	44-3/4"	11-15/16"	30
				56-1/4"	23-5/16"	45
				64-1/2"	37-1/4"	60
				69"	69"	90
36-1/4"	57-1/8"	75-1/4"	93-3/8"	51-5/8"	13-13/16"	30
				66"	27-3/8"	45
				76-7/16"	44-1/8"	60
				82-3/4"	82-3/4"	90

