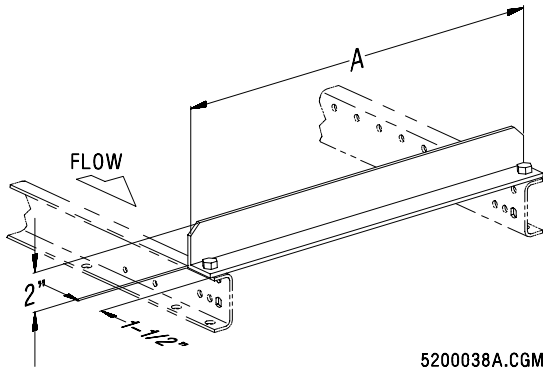


Fixed Angle Stop

Used on 12" through 24" wide gravity wheel conveyors and 12" through 36" wide gravity roller conveyor.

Made of 2" x 1-1/2" x 3/16" structural angle with painted finish. Weight is 0.17 pounds per inch of length.

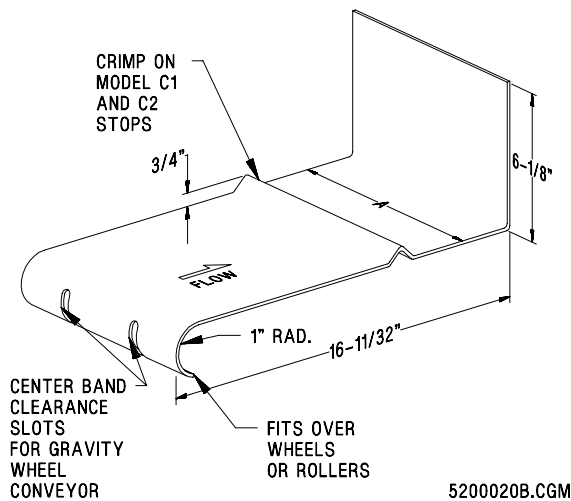


Fixed Angle Stop Dimensions

Bed Width (in.)	A Length (in.)	c-c Holes (in.)
12	12-1/8	11-1/8
18	18-1/8	17-1/8
24	24-1/8	23-1/8
30	30-1/8	29-1/8
36	36-1/8	35-1/8

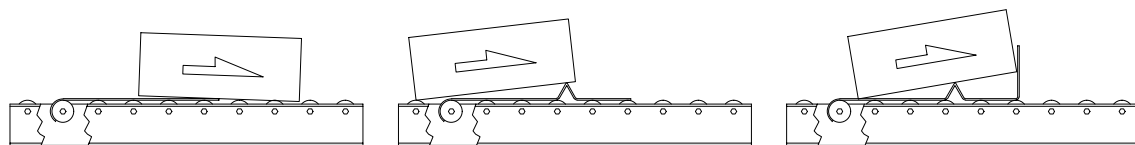
Hand Case Stop

Used on 12" through 24" wide gravity wheel and roller with axles on 3" or greater centers. Made of painted steel.



Hand Case Stop Dimensions

Conveyor Width (in.)	Model	A (in.) Width	Gage	Wt. (lb)
12	C0	9-3/8	12	7
	C1		12	7
	C2		10	9
18, 24	C0	15-3/8	12	11
	C1		12	11
	C2		10	14



5200039A.CGM

Model 300 Gravity Conveyor Accessories

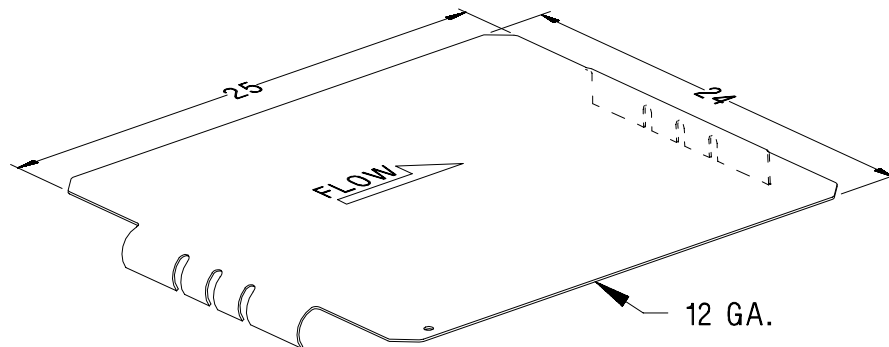
Materials Handling Products

In-Line Work Station Plate

Usually used in grocery operations as a work station for slitting open cartons or cutting them for display purposes.

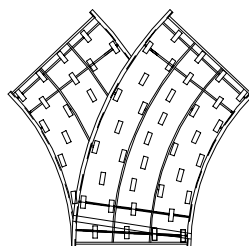
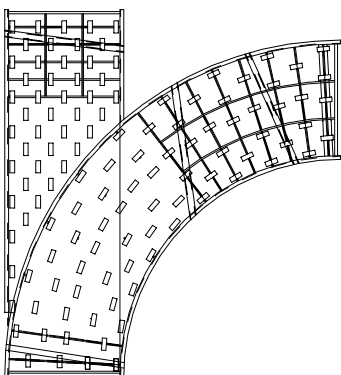
For use on 12" and 18" wide gravity wheel conveyor with axles on 3" centers and all gravity roller with axles on 3" or greater centers.

Made of 12-gage painted steel, weighs 20 pounds.



5200021A.CGM

Neutral Converging Spur and "Y" Curves



5200014A

Operation: Swivel caster wheels are mounted on a plate in the area where product can be merged from two different lines of travel.

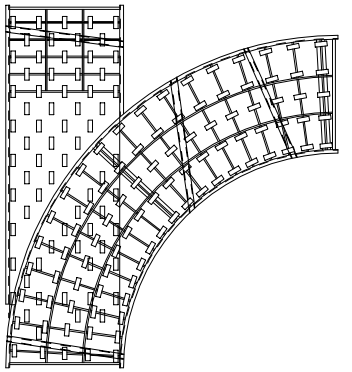
Bed: 2-1/2" deep, galvanized frame and steel wheels.

Connectors: Bar at each of the three ends.

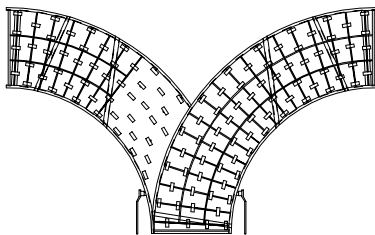
Guard Rails: Adjustable channel type.

Materials Handling Products

Spur and "Y" Curve Switches



5200013A



5200015A

Operation: Spurs consist of a straight section and an overlaying curve section. A separate set of conveyor wheels is mounted on a steel switch plate. Elevating the switch plate raises the wheels on the straight line above the level of the wheels on the curve; allowing products to flow straight through. Lowering the switch plate drops the straight line wheels below the level of the wheels in the curve; allowing products to pass through the curve.

A "Y" consists of two overlaying curves. Otherwise, they operate the same as spurs.

Switches are hand operated. Motor operated switches are available.

Bed: 2-1/2" deep, galvanized frame and steel wheels.

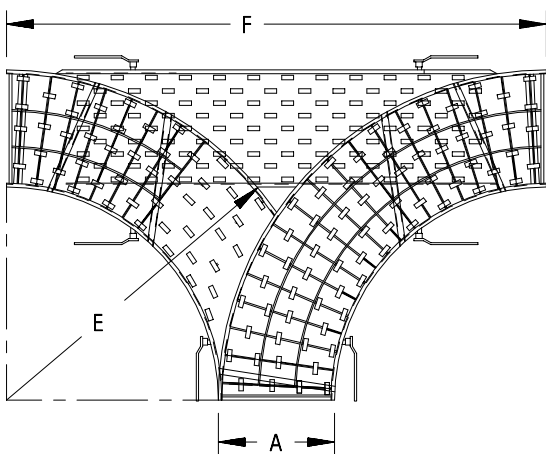
Minimum Conveying Height: 13"

Connectors: Bar at each of the three ends.

Guard Rails: Adjustable channel available.

Frame Width: 12", 18", or 24" using 45° or 90° curve(s)

6-Way Combination "Y" and Spur Switch



5200022A.CGM

Operation: Same principle as other spur and "Y" switches. Hand operated only.

Bed: 2-1/2" deep galvanized frame and steel wheels. 12", 18" and 24" widths are available.

Connectors: Bar at each of the three ends.

Guard Rails: Not included.

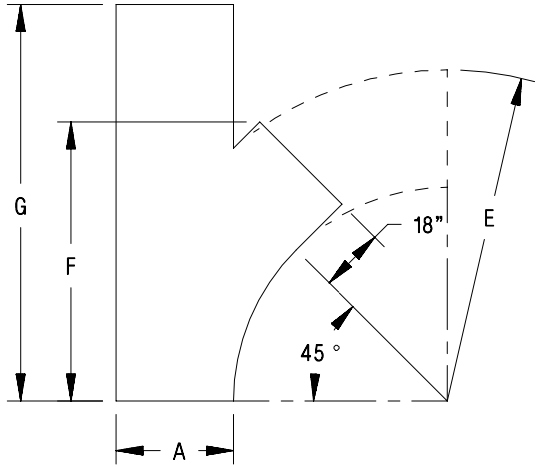
6-Way Switch Dimensions

A (in.)	E (in.)	F (in.)	Wt. (lb)
12	48-1/2	85	260
18	60-1/2	103	380

**Model 300
Gravity Conveyor Accessories**

Materials Handling Products

Spur Curves



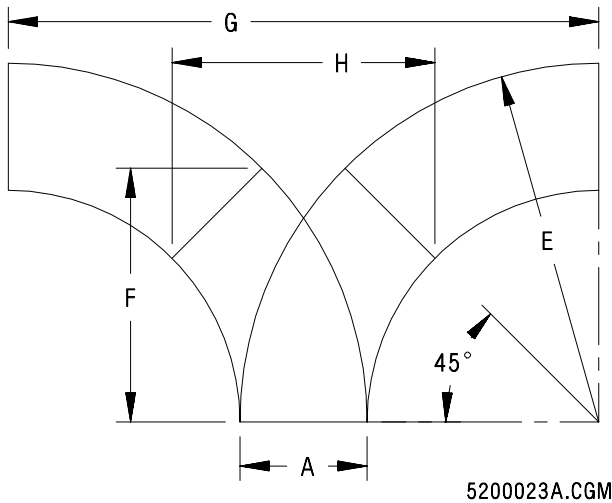
Spur Curve Dimensions

A (in.)	E (in.)	F (in.)	G (in.)
12	48-1/2	47	60
18	48-1/2	47	60
24	60-1/2	55-1/2	72

Spur Curve Weights (lb)

Width (in.)	Neutral Converging		Hand Operated Switch	
	45°	90°	45°	90°
12	80	145	115	120
18	160	190	165	180
24	230	270	215	270

“Y” Curves



“Y” Curve Dimensions

A (in.)	E (in.)	F (in.)	G (in.)	H (in.)
12	48-1/2	31-1/2	85	33-3/4
18	48-1/2	31-1/2	79	36-1/4
24	60-1/2	42-3/4	97	45-7/8

“Y” Curve Weights (lb)

Width (in.)	Neutral Converging		Motor Operated Switch	
	45°	90°	45°	90°
12	90	135	120	165
18	120	165	150	185
24	170	205	225	295

Materials Handling Products

Beds Punched on 5' Centers

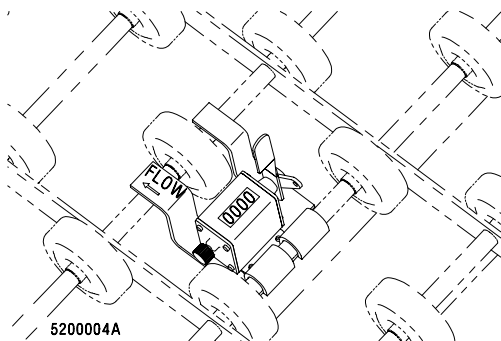
All gravity wheel and gravity roller beds are punched at each end for attaching to supports. If supports are required on 5 foot centers, beds can be ordered with extra punching.

Plastic Coated Roller

All rollers are available with a resilient plastisol covering. The covering reduces shock and will not mark or scratch conveyed goods. It also helps prevent side slip.

The covering is .060 inch thick and comes in black. Other colors are available. Cannot be used on 1.4 inch diameter gravity roller curves or straights with 1-1/2 inch roller centers.

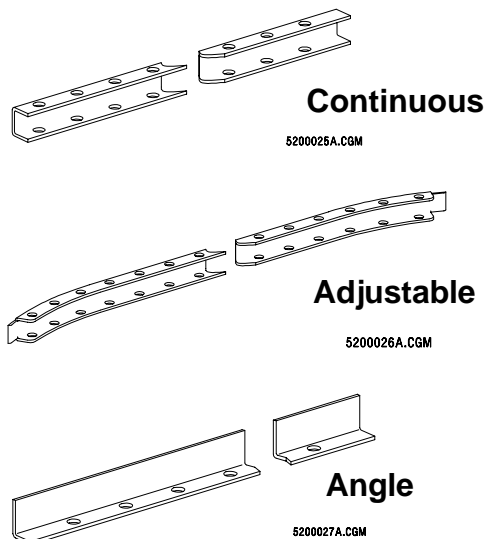
Case Counter



For use on all gravity curves and straights with axles on 3" centers except for 12" wide with 28 wheels per foot, and 12" wide with 12 wheels per foot.

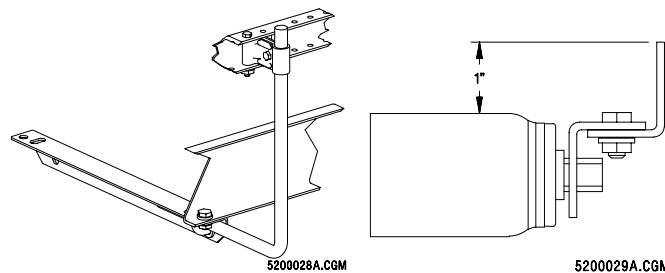
The counter will count up to 99,999 and can be reset to zero. The counter will not count cartons in a slug loaded line. Weighs 1 pound.

Guard Rails



Continuous and adjustable channel guard rail: 12-gage galvanized steel 1-5/8" high with 1-5/32" flanges. Available in straight lengths and curves. Weight is 2 lb/ft.

Angle guard rail: 1-5/16" x 1-3/32" formed 12-gage galvanized steel. Weight is 1 lb/ft.



**Model 300
Gravity Conveyor Accessories**

Materials Handling Products

Gate Sections

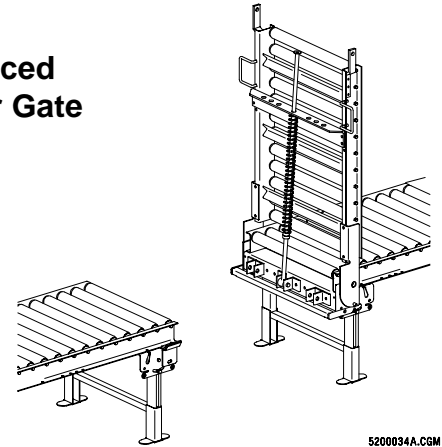
Gate sections permit the conveyor line to be opened for temporary flow of traffic through the conveying line. All gates have a maximum lift effort of 40 pounds.

Counterbalanced gates are applied primarily when the weight of the gate section would make the lift effort more than the maximum 40 pounds.

Depending on the length and weight of the gate section, between one and seven spring rods are used. Compression die springs in sizes and quantity needed to compensate for the weight of the gate section are added to these rods. The springs allow the gate to be opened with a minimum of effort, hold the gate open until it is manually closed, and prevent the gate from slamming as it is closed.

Non-counterbalanced gates, with their standard 2-1/2 inch deep frames can be used only with conveyor sections having 2-1/2 inch frames. (See Table 1.)

Counterbalanced Gravity Roller Gate



Non-Counterbalanced Gravity Wheel Gate

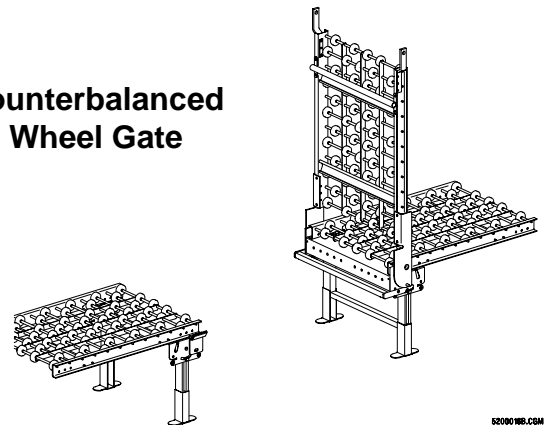


Table 1 Gate Specifications

	Non-counterbalanced / Counterbalanced			Non-counterbalanced / Counterbalanced			Counterbalanced			
Frame Depth (in.)	2.5			2.5			3.5			
Frame Material	Aluminum or Galvanized Steel			Galvanized or Enameled Steel			Enameled Steel (10 gage)			
Length (in.)	36 *			36			36, 48, 60			
Roller Material	—			Galvanized Steel			Galvanized Steel			
Roller Diameter (in.)	—			1.9			1.9			
Roller Centers (in.)	—			3			3			
Roller Bearing Type	—			SL			SR			
Wheel Material	Steel or Aluminum			—			—			
Wheel Centers (in.)	3			—			—			
Nominal Width (in.)	12	18	24	12	18	24	18	24	30	36
Wheels/ft	10 or 12	16 or 18	20 or 24	—	—	—	—	—	—	—
Gate Weights (lb)	26 / 48	32 / 56	39 / 72	26 / 55	32 / 65	39 / 88	87	115	134	161

*Up to 5-foot lengths are available as Specials.

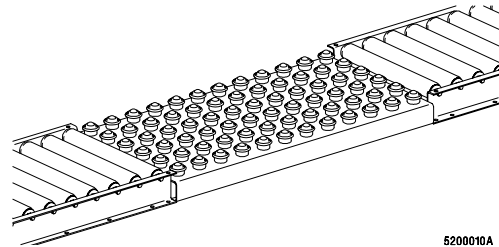
Ball Transfer Table

Use with 1.4" or 1.9" diameter gravity roller conveyor. 10 gage slider bed frame with 1" diameter balls, 50 pound capacity each.

3-7/8" nominal conveying surface height. Requires its own supports.

Transfer Table Specifications

Width (in.)	Length (in.)	Qty of Balls
18	36 or 48	72 or 96
24	36 or 48	96 or 128
30	36, 48 or 60	120, 160 or 200
36	48 or 60	192 or 240



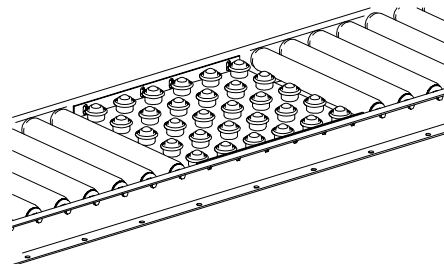
5200010A

Ball Transfer Plate

Use with 1.4" or 1.9" diameter gravity roller conveyor. Replaces several rollers and bolts to existing gravity roller axle holes. 10-gage galvanized frame with 1" diameter balls, 50 pound capacity each.

Transfer Plate Specifications

Width (in.)	Length (in.)	Qty of Balls
18	18	30
24	24	56
30	24	72
	30	90
36	36	132



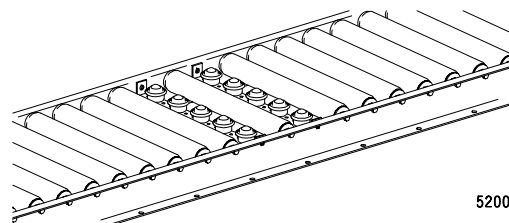
5200011A

Ball Transfer Strip

Transfer Strip Specifications

Conveyor Width (in.)	Qty of Balls
12	2, 3, or 4
18	4, 5, or 7
24	5, 7, or 10
30	7, 9, or 13
36	8, 11, or 16
42	10, 13, or 19
48	11, 15, or 22
54	13, 17, or 25

Use with 1.4" or 1.9" diameter gravity roller conveyor. Replaces one roller and bolts to the axle holes. 12-gage galvanized steel frame with 1" diameter balls, 50 pound capacity each.



5200012A

**Model 300
Gravity Conveyor Accessories****Materials Handling Products****Extendable Gravity Conveyor****Equipment Description**

The Extendable Gravity Conveyor is used for truck loading and unloading. For loading, the conveyor can be extended into the front of the truck. As loading progresses, the conveyor is gradually pushed back (retracted). For unloading a truck, the procedure is reversed. The conveyor can be moved quickly and easily on its 5" diameter casters, which can be locked into position.

Specifications

The retracted length of the conveyor is 11-1/2', including caster and floor lock projections. Its extended length is 30 feet. For longer runs, standard gravity conveyor can be connected to either end of the extendable conveyor.

An extendable gravity conveyor unit consists of three 10 foot sections of 18" wide gravity wheel conveyor, with galvanized frame, steel wheels

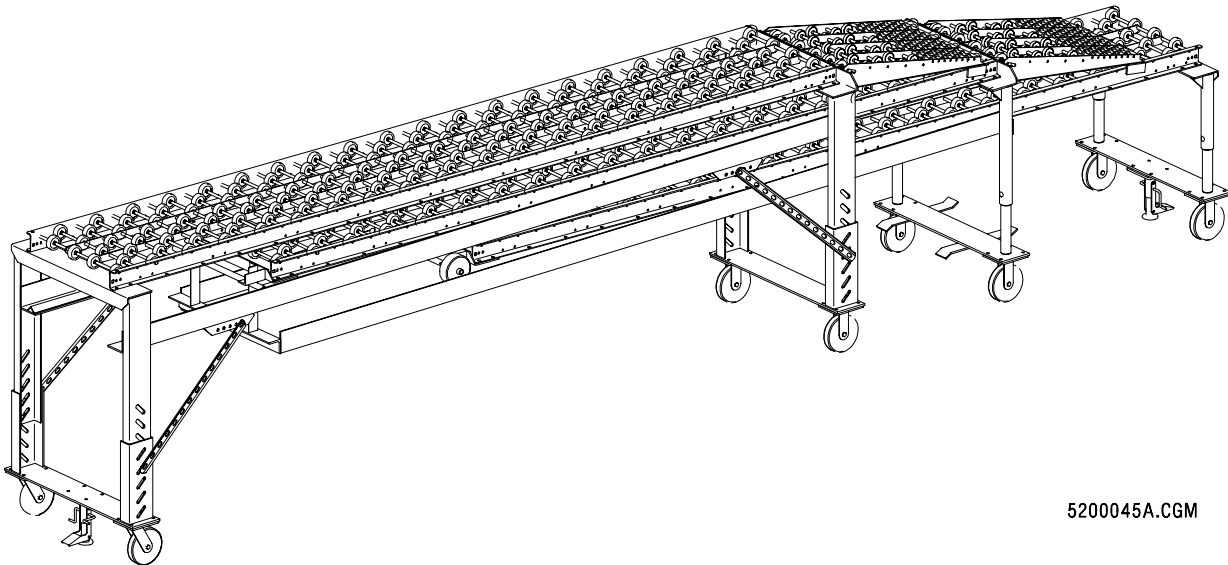
(18 per foot), positioned high. As a non-standard variation, this unit is also available in gravity roller sections.

Of the three conveyor sections, two are telescoping. To compensate for the height difference between the conveyor sections, a wheel ramp is pivoted from the discharge end of two sections. Each ramp can be lifted and locked in a vertical position and lowered to its normal position. Each section has a built-in pitch of 2 inches, and the overall width of the unit is 26-1/4 inches.

Supports

Two telescoping channel supports with casters and telescoping pipe supports are provided as standard. This allows quick and easy adjustment to varying truck heights. As the unit is retracted, the supports on the two extendable sections automatically lift off the floor, leaving only the two rigid and two swivel casters, on the first section, to roll on the floor when the unit is moved or stored.

Conveyor Weight: 750 lb



5200045A.CGM