

- Zero Line Pressure
- Quiet
- Energy Efficient
- Pop-Out Rollers
- Motorized Chain Oiler

This Automatic Pressure Conveyor provides air operated roller accumulation. Roller driving force is supplied by a continuous padded chain which presses against the bottom of the carrier rollers. A pair of air actuators is used to raise each 24" pressure assembly which raises the padded chain to drive the carrier rollers. Air actuators are controlled by sensor assemblies located on 24" centers.

Model 1176 can be intermixed with 1276 where accumulation is not required.

Operation: One-way, horizontal, accumulation.

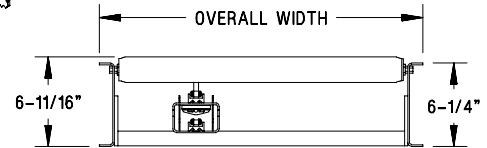
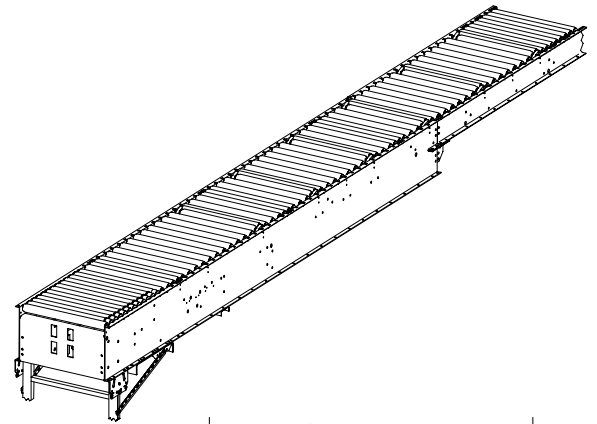
Accumulation: All 2' zones except the first 4' of a charge/drive bed. Last 2' of a discharge bed is live roller.

Capacity: 100 lb/ft and 200 lb/item maximum. Minimum weight required to depress a single sensor roller is 1 lb of force on the sensor roller.

Air Operating Pressure: 15 psi

Speeds: 40-200 fpm fixed in 10 fpm increments.

Bed Length: 12'. Other lengths available.



5800077B.CGM

Overall Conveyor Width

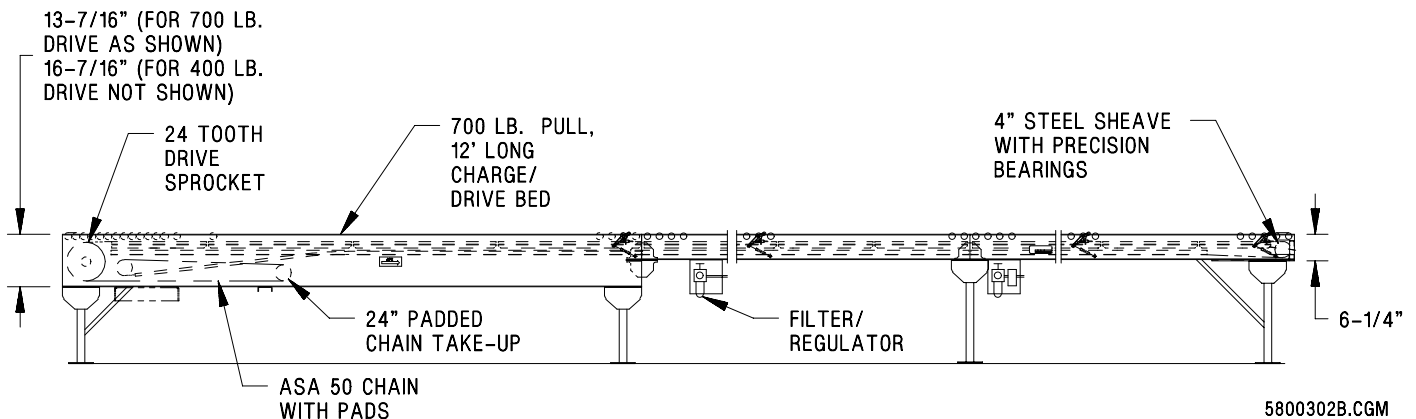
Width	18-1/4"	24-1/4"	30-1/4"	36-1/4"
-------	---------	---------	---------	---------

Drive: 700 lb pull end drive with 24" of padded chain take-up. 2-7/16" diameter drive shaft. Has built-in automatic spring take-up.

Motor and Reducer: 1/2-5 hp, C-face.

Bed: 10 gage, 6-1/4" deep, painted, bolted construction.

Padded Chain: ASA 50 roller chain with individual pads.



5800302B.CGM

Model 1276**Padded Chain Live Roller APC® Conveyor****Materials Handling Products**

High Dust Sensor Valve Option: For environments that have large quantities of silt, dust or flour.

Maximum Conveyor Length a Single Drive can Power: Approximately 300 ft.

Rollers: 1.9" diameter, 16 gage, galvanized steel with 7/16" hex SR bearings.

Roller Centers: 3"

Sensor Rollers: 1" diameter plastic roller supported by plastic arms that pivot on axle of a carrier roller.

Zones: 2'

End Sheaves: 3-1/2" diameter steel with precision, grease-packed bearings on an 11/16" hexagonal axle.

Air Hook-Up Kit: Regulator, filter with an auto drain, and gage.

Automatic Chain Oiler: The oiler controller is a microprocessor based timer used to power a motor driven injection pump(s). The pump may have one or two independently adjustable outputs; output provides lubrication for the drive chain (for speeds 150 fpm and above), and the other is for the padded chain.

The controller was designed for use with 1/2 hp to 5 hp motors. Use with larger motors or powering the controller with a variable frequency drive should be reviewed with the Rapistan Systems Product Development Engineering Department.

The new oiler assembly is completely retrofittable using the same felt pads and reservoir. The assembly (controller and pump) contains no individual replaceable parts. Several voltage options are available.

Accessories

Case Stop: Air, foot, hand or motor operated.

Support Brackets for Adjacent Conveyor: For attaching any 6-1/4" deep conveyor to the charge end of a 1276 charge/drive bed. This eliminates the need for a second support at this joint.

Slave Drive: Model 996 curves and junctions.

Options

Dual Sensors: A second sensor 6" or 8" upstream, mechanically linked to existing sensor.

Discharge Zone Control W/Brake: Deactivates last two discharge zones and stops rotation of two feet of rollers to begin accumulation.

Discharge Zone Control: Deactivates last discharge zone.

Intermediate Zone Control: Deactivates one intermediate zone of any length.

3' Zones: All zones are 3' except the last 2' of the discharge bed, which is live roller, and the zone before that, which is 4' long.

Drive: 400 lb pull end drive.

Rollers: 14 gage, high speed HQ bearings, pop-out and captured rollers low. 4" c-c.

Intermediate Zone Control W/Brake: Deactivates two adjacent intermediate zones. A 2' brake is centrally located.

Unit-to-Unit Zone Control: Adds a sensor roller to charge bed of downstream 1276 unit to deactivate last zone of upstream 1276 unit.

Solid Slug: Every zone or selected zones at the charge or discharge end can be activated to live roller mode by means of an electrical signal.

Skewed Roller Drive Bed: 12' long, pop-out rollers high on 3" centers and approximately 8' of skewed rollers.

Air Termination Kit: When 1276 is intermixed with 1176, the 1276 air circuitry must be terminated.

Retractable Sensors: Includes drive, intermediate, and discharge beds with sensors-down for high throughput at low speeds and quiet operation. Offers zero-line pressure accumulation, slug charge, slug discharge, singulation discharge, dynamic accumulation, and live roller operation without singulation. Field retrofit kit also available.