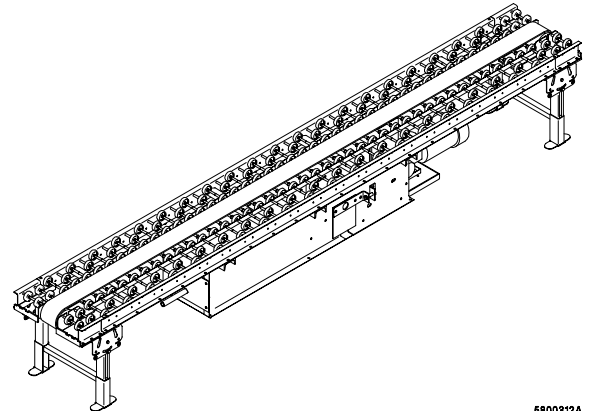


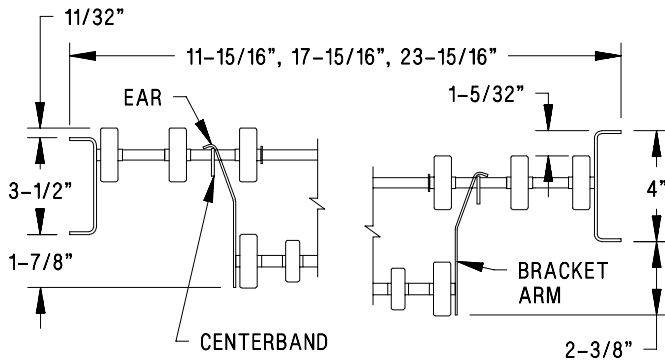
### Materials Handling Products

- Zero Line Pressure
- Quiet Operation
- Low Belt Tension
- Singulation
- Minimum HP Requirements



5800312A

These Automatic Pressure Conveyors are powered belt wheel conveyors. The belt moves along the center of the conveyor between a pattern of carrier wheels. Conveyed items are supported by these wheels and moved along by pressure of the belt against the bottom of the conveyed items.



WHEELS HIGH

WHEELS LOW

5800332A.CGM

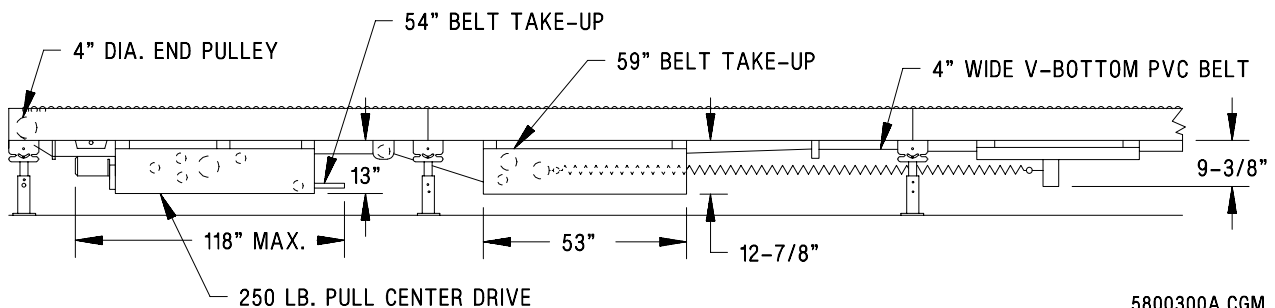
Models	1211	1221	1230
Accumulation	Yes	Yes	Limited
Singulation	Yes	Yes	No
Operation	1-way	1-way	2-way
Min Item Wt	5 lb	2 lb	None
Max Item Wt/Ft	50 lb	75 lb	75 lb
Max Item Length	36"	36"	None
Max Pitch In 10'	2"	2"	10"

**Accumulation:** 1211 sensor wheels on 24" centers and adjustable pressure wheels on 12" centers. 1221 sensor fingers on 24" centers and pressure cams on 12" centers. 1230 adjustable spring loaded pressure wheels on 18" centers.

**Drive:** 250 lb center drive. 8" diameter drive pulley with molded-on lagging and a (1-7/16" for center drive; 1-3/16" for end drive) diameter shaft mounted in self-aligning bearings.

**Motor and Reducer:** 1/3–1-1/2 hp, C-face.

**Bed:** 12 gage, 3-1/2" deep, galvanized, 1" flanges, bolted construction.



5800300A.CGM

**Model 1211, 1221, 1230**  
**V-Bottom Belt Wheel APC®**

**Materials Handling Products**

**Bed Lengths:** 10'. Other lengths available.

**Axle Centers:** 3"

**Speeds:** 40-120 fpm fixed in 10 fpm increments.

**Drive Take-up:** 4" diameter belt take-up pulley with greased for life, sealed bearings. Mounted on a 1" diameter fixed shaft. 54" of available take-up (center drive) or 30" for end drive.

**Belt:** 4" wide, V-bottom, PVC impregnated, 1 ply .190" thick with smooth top surface.

**Carrier Wheels:** 1-15/16" diameter, zinc plated steel on 1/4" diameter axles. Greased steel bearing.

**End Cap:** 6" long with 4" diameter pulley and fixed 1" diameter axle, greased bearings.

**Auxiliary Spring Take-up:** Two 6" diameter pulleys provide 59-1/4" of belt take-up.

**Accessories**

**Slave Drive:** Model 996 curves and junctions.

**Case Stop:** Air, foot, hand, or motor operated.

**Triple Snubber:** Positioned at the lower junction of 1230 beds of changing plane.

**Nose-over Splice:** Connects two conveyor beds, set at opposing angles, together.

**Options**

**Pressure Wheel Centers for 1230:** 12"

**Drive:** 250 lb pull end drive. 8" diameter grooved pulley on a 1-3/16" diameter shaft. 4" diameter belt take-up pulley on a 1" diameter fixed shaft. 30" of available take-up.

**Belt:** .220" thick for 1211 liquor distribution.

**Wheels Low:** with 4" frame.

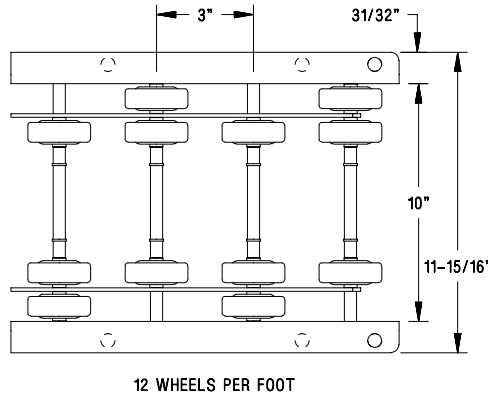
**Extended Sensors:** (Model 1221 only) For products such as totes that are separated by gaps.

**Conveyor Weights (lb)**

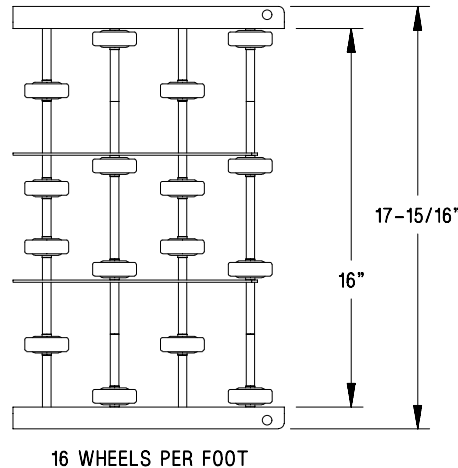
Width	12"	18"	24"
Drive	267	288	294
Per Foot	15	16	18

Weights include 3 lb/ft for supports.

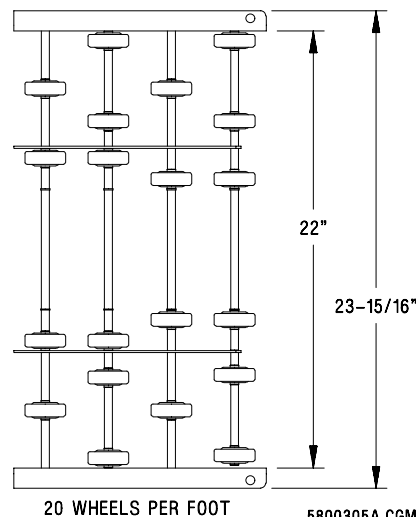
**Wheel Patterns:**



5800303A.CGM



5800304A.CGM



5800305A.CGM

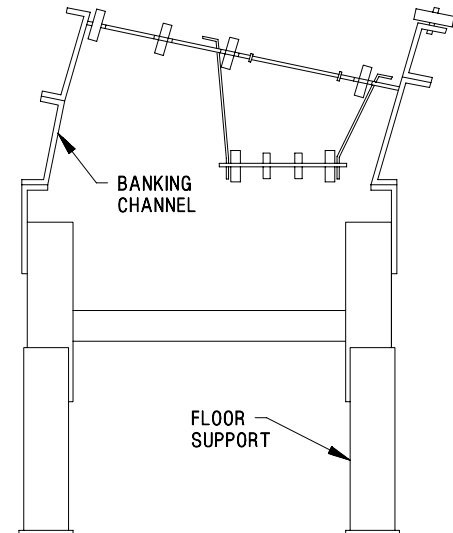
**Materials Handling Products**

**Banking Channels**

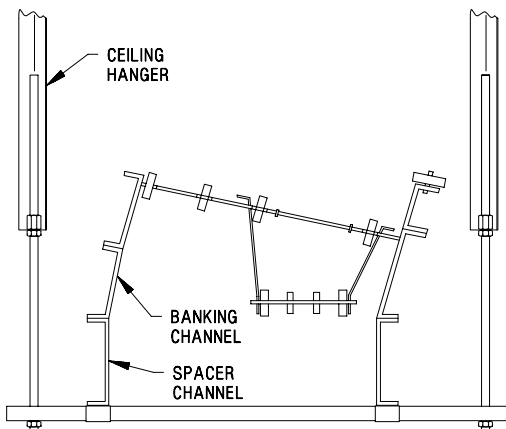
A banking channel is used when intermixed cartons of varying widths, including some too narrow to remain centered over the belt for satisfactory conveying or when cartons of larger widths but lighter weight, tend to wander off the belt on units of 50 feet or more in length.

This conveyor uses the standard 1211 components with the following exceptions:

**Bed:** Tilted 10 degrees. Belt, end pulleys, and associated sensor and pressure wheels are offset from the center to low side. A 5 degree tilt is optional.

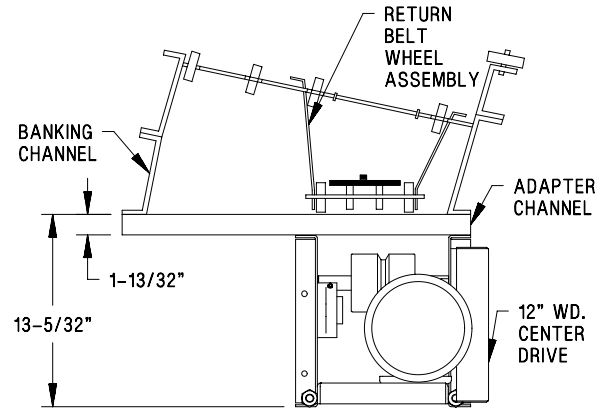


5800314A.CGM



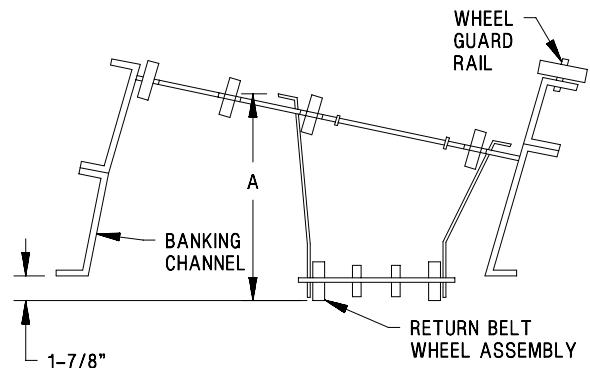
5800315A.CGM

**Drive:** Mounted offset.



5800363A.CGM

**Guard Rail:** Wheel type guard rail is used at the low side.



5800362A.CGM

Degree of Tilt	A (in.) Height
5	4-25/32
10	5-13/32

**NOTE:** Model 1230 can be tilted up to 5 degrees in some applications. Contact Design Services Engineering, at Rapistan Systems, for more information.